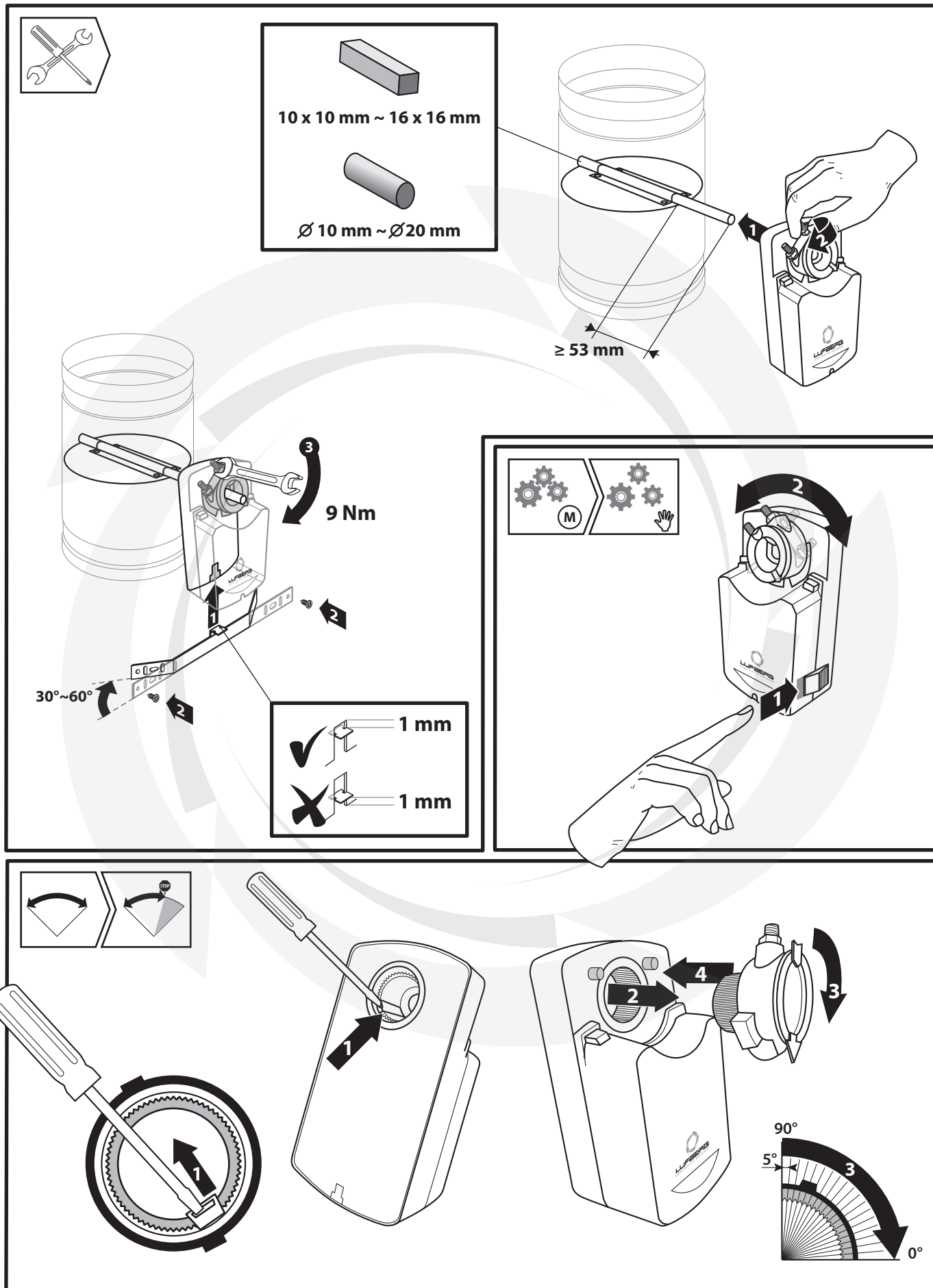


Actuator, Klappenstellantrieb, Электропривод, Servopohon

DA08N..., DA16N..., DA24N..., DA32N



LUFBERG
CONSTRUCTIVE DECISIONS

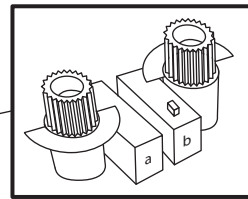
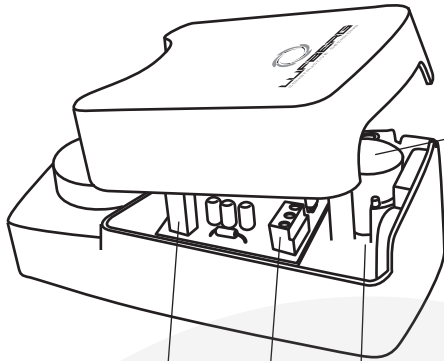
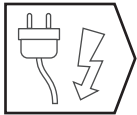


Actuator, Klappenstellantrieb, Электропривод, Servophon

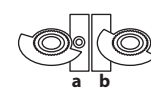
DA08N..., DA16N..., DA24N..., DA32N



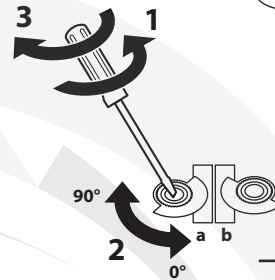
LUFBERG
CONSTRUCTIVE DECISIONS



DA08N...S,
DA16N...S,
DA24N...S,
DA32N...S

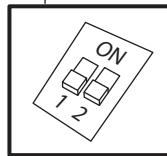
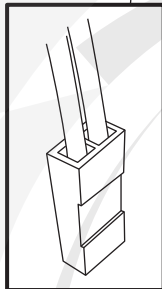
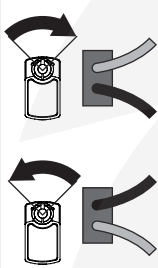


a = 10°
b = 80°

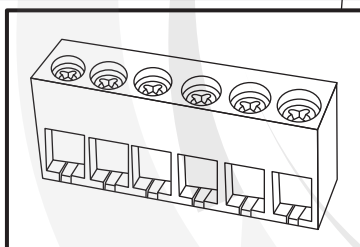
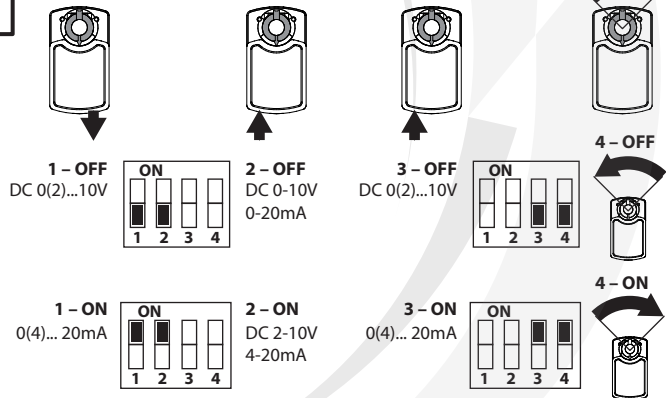


a: 0° ~ 90°
b: 0° ~ 90°

DA08N24(S), DA08N220(S),
DA16N24(S), DA16N220(S),
DA24N24(S), DA24N220(S),
DA32N24(S), DA32N220(S)



DA08N24PI, DA08N24PIS, DA08N220P, DA08N220PS,
DA16N24PI, DA16N24PIS, DA16N220P, DA16N220PS,
DA24N24PI, DA24N24PIS, DA24N220P, DA24N220PS,
DA32N24PI, DA32N24PIS, DA32N220P, DA32N220PS

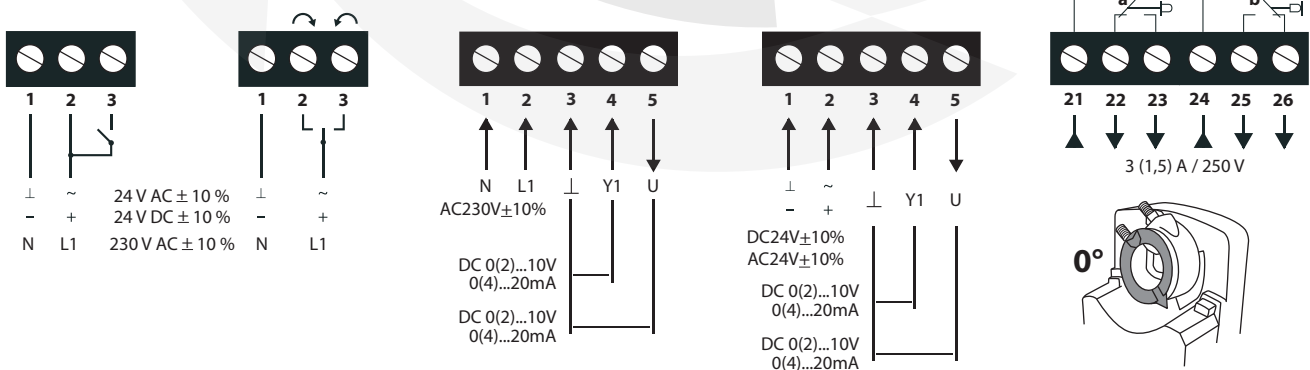


DA08N24(S), DA08N220(S),
DA16N24(S), DA16N220(S),
DA24N24(S), DA24N220(S),
DA24N24(S), DA24N220(S)

DA08N220P, DA08N220PS,
DA16N220P, DA16N220PS,
DA24N220P, DA24N220PS,
DA32N220P, DA32N220PS

DA08N24PI, DA08N24PIS,
DA16N24PI, DA16N24PIS,
DA24N24PI, DA24N24PIS,
DA32N24PI, DA32N24PIS

DA08N...S,
DA16N...S,
DA24N...S,
DA32N...S



All rights reserved.
The company Lufberg reserves the right to change technical specifications of product without previous announcement.
On these product was issued Declaration of conformity in accordance with those directives: the Low Voltage Directive 2006/95/EC, the Electromagnetic Compatibility Directive 2004/108/EC and Machinery Directive 2006/42/EC

DA08N..., DA16N..., DA24N..., DA32N...

