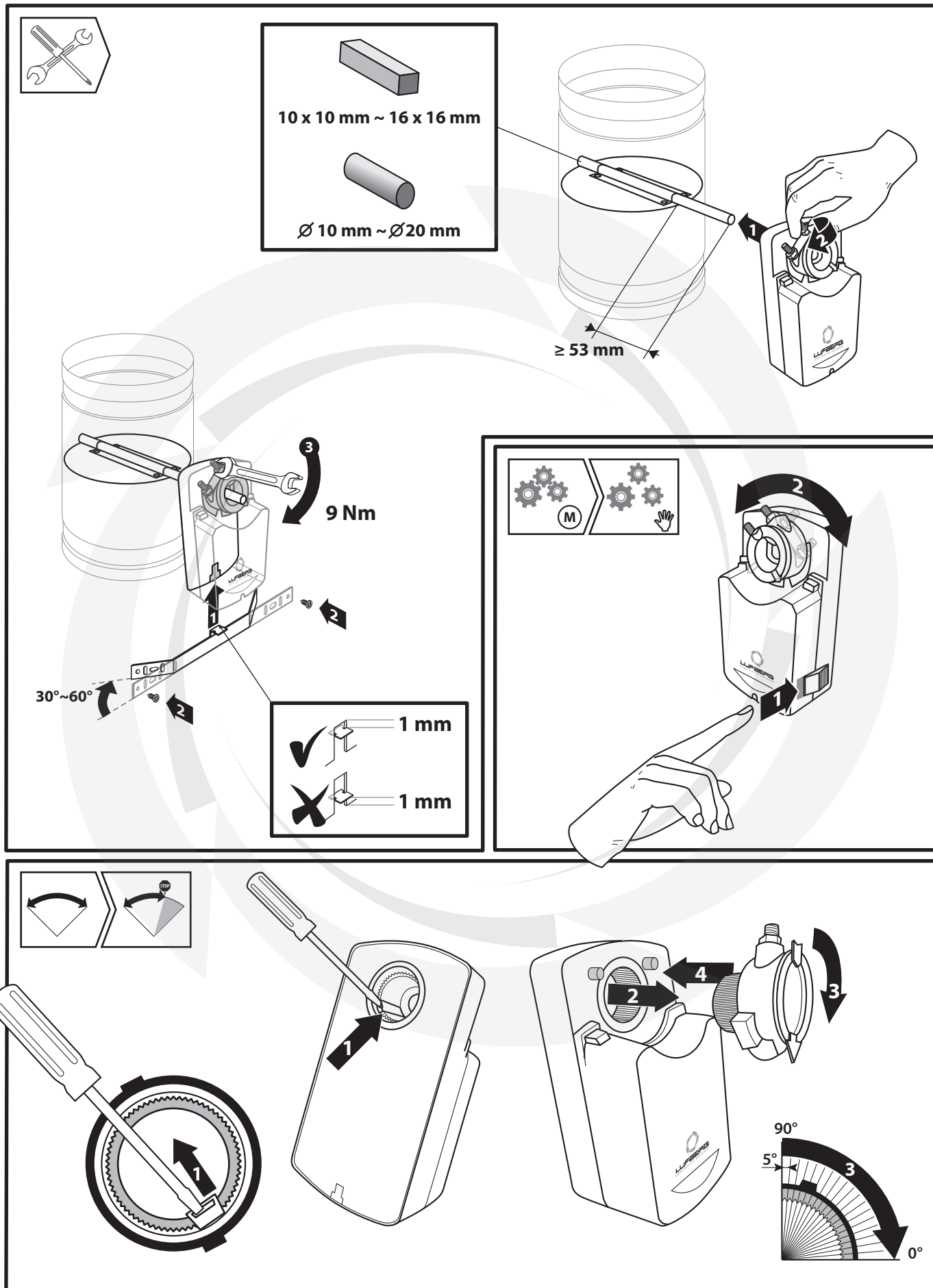


Actuator, Klappenstellantrieb, Электропривод, Servopohon

DA08F..., DA16F..., DA24F...



LUFBERG
CONSTRUCTIVE DECISIONS

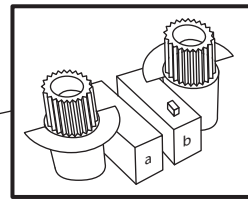
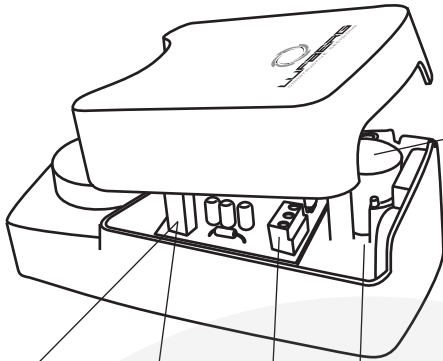
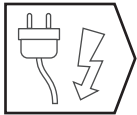


Actuator, Klappenstellantrieb, Электропривод, Servophon

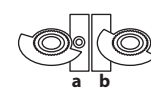
DA08F..., DA16F..., DA24F...



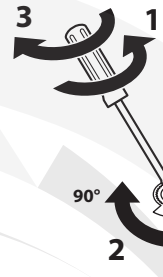
LUFBERG
CONSTRUCTIVE DECISIONS



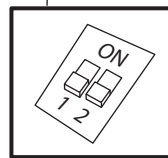
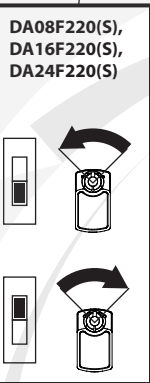
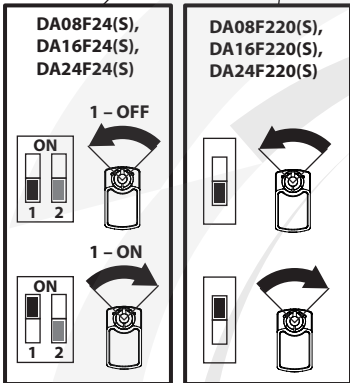
DA08F...S,
DA16F...S,
DA24F...S



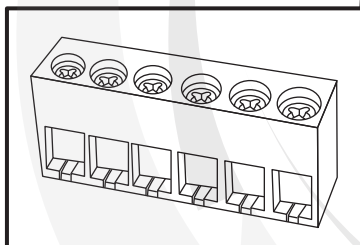
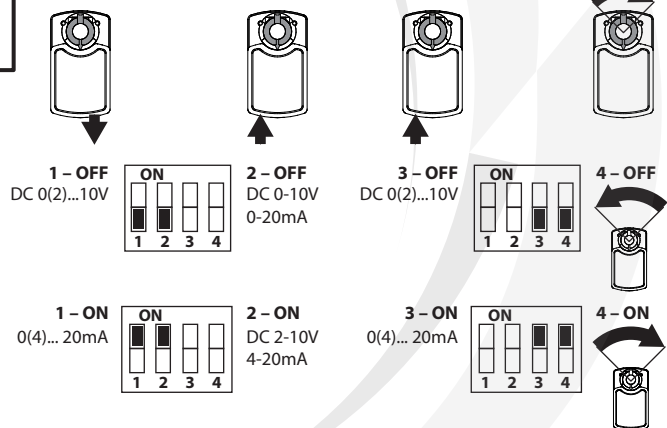
a = 10°
b = 80°



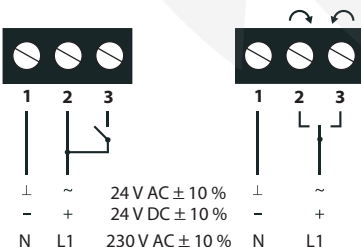
a: 0° ~ 90°
b: 0° ~ 90°



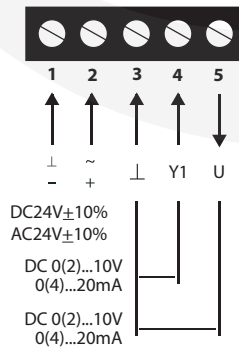
DA08F24PI, DA08F24PIS, DA08F220PI, DA08F220PIS,
DA16F24PI, DA16F24PIS, DA16F220PI, DA16F220PIS,
DA24N24PI, DA24N24PIS, DA24N220PI, DA24N220PIS



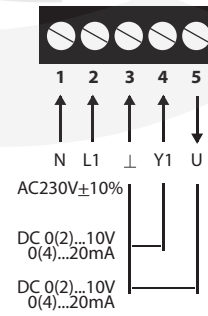
DA08F24(S), DA08F220(S),
DA16F24(S), DA16F220(S),
DA24F24(S), DA24F220(S)



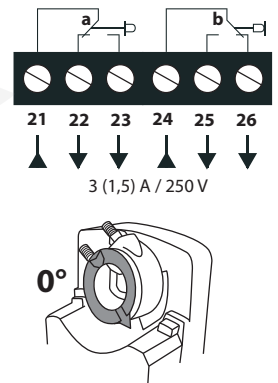
DA08F24PI, DA08F24PIS,
DA16F24PI, DA16F24PIS,
DA24F24PI, DA24F24PIS



DA08F220PI, DA08F220PIS,
DA16F220PI, DA16F220PIS,
DA24F220PI, DA24F220PIS



DA08F...S,
DA16F...S,
DA24F...S



All rights reserved.
The company Lufberg reserves the right to change technical specifications of product without previous announcement.
On these product was issued Declaration of conformity in accordance with those directives: the Low Voltage Directive 2006/95/EC, the Electromagnetic Compatibility Directive 2004/108/EC and Machinery Directive 2006/42/EC

DA08F..., DA16F..., DA24F...

